

24V Interface Kit 2nd Generation Ductless Systems

Model: KSAIC0401230 (208-230V)

Submittal Data

Job Data: _____ Location: _____

Buyer: _____ Buyer P.O. #: _____ Carrier #: _____

Unit Number: _____ Model Number: _____

Performance Data Certified By: _____ Date: _____



The 24V INTERFACE KIT 2nd Generation is used to connect:

- A **SINGLE ZONE** Ductless System to a 3rd party single stage conventional thermostat (sold separately) providing AUTO fan speed on the indoor unit.
- A **MULTI-ZONE** Ductless System to a 3rd party single stage conventional thermostat (sold separately) providing AUTO fan speed on the indoor unit.

Features

- **AUTO Fan speed** on Single Zone and Multi-zone on Ductless applications
- One 24V INTERFACE KIT per indoor head
- Keeps the Inverter Compressor operating as a Variable Speed System
- Rated for outdoor and indoor mounting
- Dry mode contact for active dehumidification control
- Remote ON/OFF contact
- Auxiliary Heat control through the thermostat
- Diagnostic code display LEDs
- 208/230V Transformer Built-in

Parts included

- 24V INTERFACE Control Box
- Installation manual
- Wall anchors
- Screws M4X20mm
- 16.4ft. (5m) Return Air Thermistor Assembly (Used on future applications)

Accessories, Sold Separately

- 115V transformer RCD# 11203103000393, used only on ductless systems with 115V power.

Compatibility

The 24V INTERFACE KIT is compatible with most thermostats matched with the Ductless Systems listed below. Before installation, check the compatibility of your Ductless System. Professional installation is recommended.

Type of Indoor unit	Indoor Family Name	Single Zone Outdoor Family Name	Multi-zone Outdoor Family Name	208/230V
HIGH WALL	DLFPHA	DLCPRA	DLCMRA	All Sizes
	DLFSHA	DLCSRA	DLCMRA	See Note
	DLFEHA	DLCERA	DLCMRA	All Sizes
CASSETTE	DLFSCA	DLCSRA	DLCMRA	All Sizes
	DLFLCA	DLCLRA		All Sizes
DUCTED	DLFSDA	DLCSRA	DLCMRA	All Sizes
	DLFLDA	DLCLRA		All Sizes Except size 58
CONSOLE	DLFSFA	DLCSRA	DLCMRA	All Sizes Except size 12
	DLFLFA	DLCLRA		All Sizes Except size 58

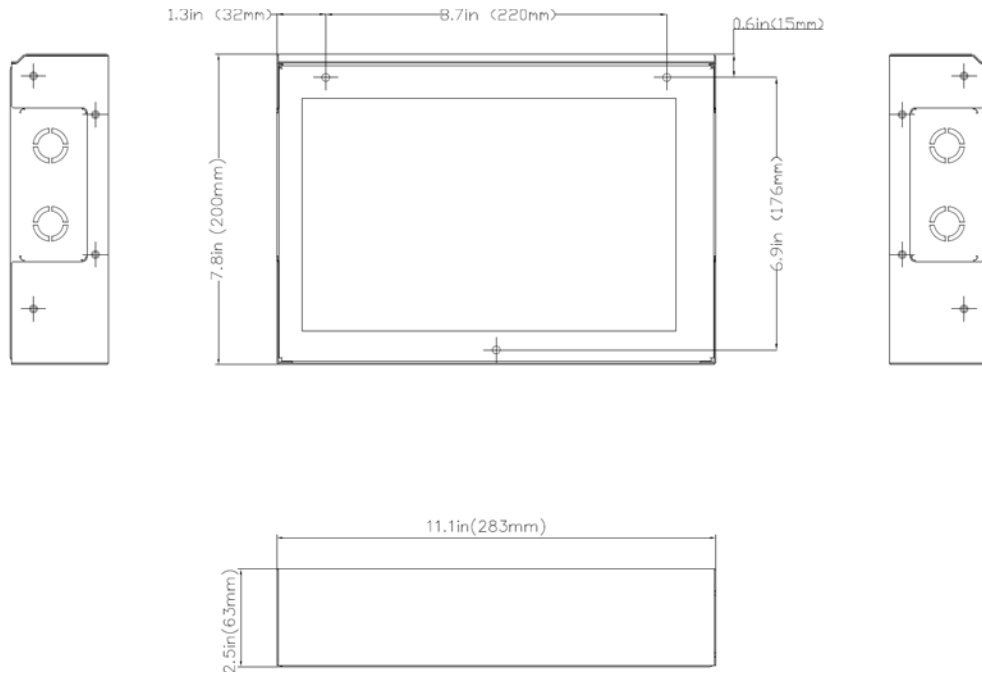
○	Optional
■	Not Compatible

Notes: The Indoor unit requires an updated control board for compatibility with the 24V Interface Kit. High Wall units DLFSHA starting with Serial # V1910V10001 are shipped with the compatible control board. For other model numbers not shown on the table above, please contact your ductless representative.

*Except size 58

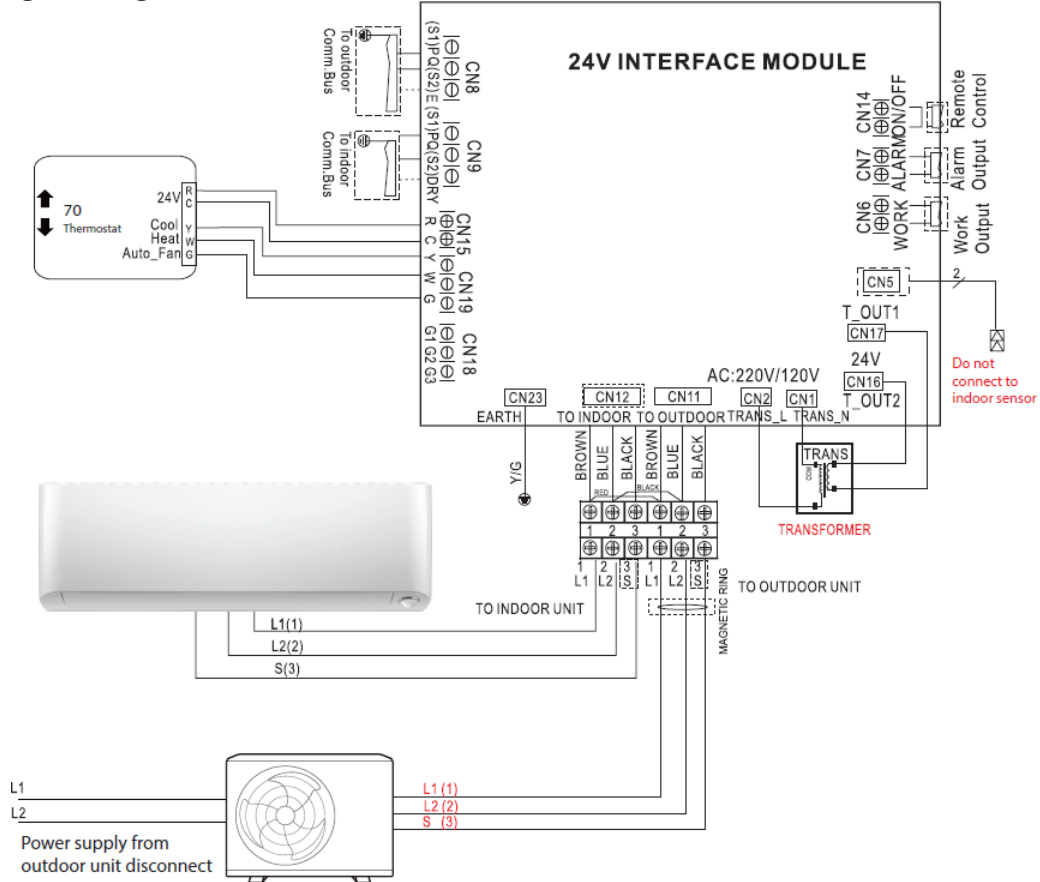
**Except sizes 12 and 58

Construction View



Wiring Diagrams

1. Wiring Diagram Single Zone DLCPRA, DLCSRA DLCERA or Multi-zone DLCMRA Ductless



2. Wiring Diagram Single Zone DLCLRA Ductless

